



GMT MONTHLY MEMBERSHIP PROGRESS REPORT

Results as of: 5/31/2017

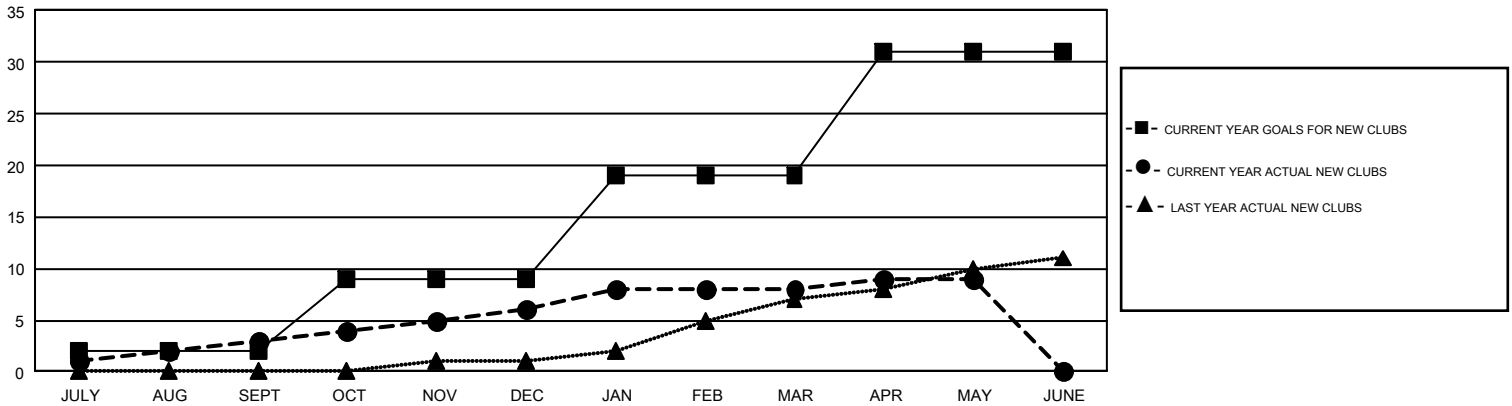
GMT Constitutional Area 1, Group D

GMT: JUDY HANKOM

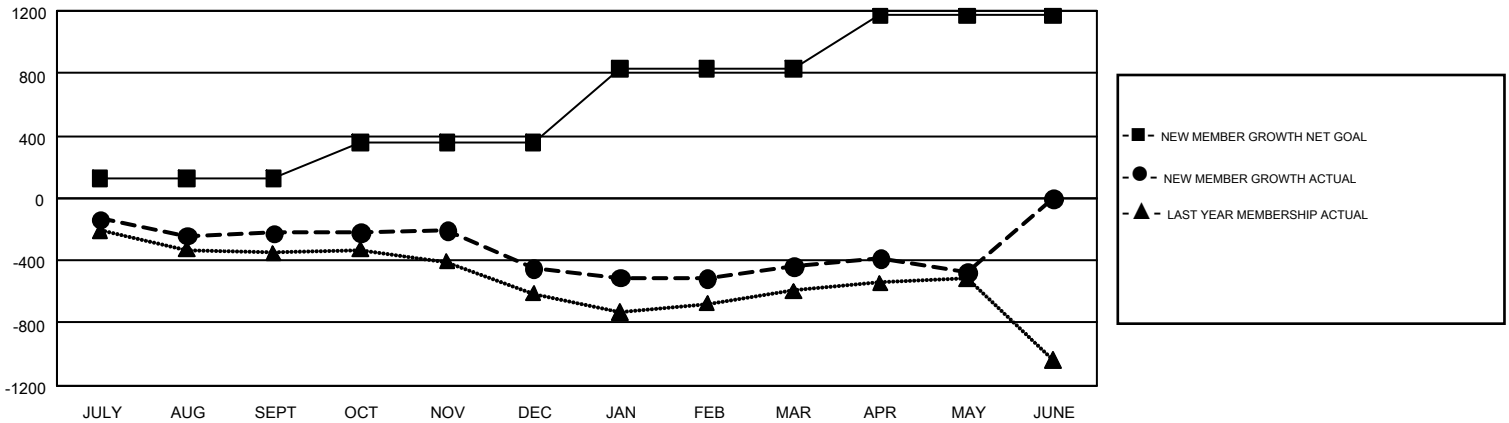
REPORT DOES NOT INCLUDE CLUBS IN UNDISTRICTED AREAS.

Clubs				Members			
RESULTS FOR 2016-2017				RESULTS FOR 2016-2017			
QUARTER	NEW CLUB GOAL	NEW CLUBS	DROPPED CLUBS	QUARTER	NEW MEMBER GROWTH NET GOAL (not reinstated or transfers)	NEW MEMBER GROWTH ACTUAL (not reinstated or transfers)	DROPPED MEMBERS ACTUAL (including transfers)
JULY/AUG/SEPT	2	3	3	JULY/AUG/SEPT	128	995	1,217
OCT/NOV/DEC	7	3	6	OCT/NOV/DEC	229	1,001	1,228
JAN/FEB/MAR	10	2	4	JAN/FEB/MAR	473	1,031	1,021
APR/MAY/JUNE	12	1	2	APR/MAY/JUNE	341	641	677

GOALS AND ACTUAL NEW CLUBS CUMULATIVE



GOALS AND ACTUAL MEMBERS CUMULATIVE



DROPPED CLUBS: 15	1,057 CLUBS OF 1,546 ADDED 1 OR MORE NEW MEMBERS	GENDER DISTRIBUTION
DROPPED MEMBERS	CLICK HERE FOR CUMULATIVE MEMBERSHIP DATA	MALE 36,421 (74.90%)
DECEASED 614		FEMALE 12,207 (25.10%)
CLUB CANCELLED 64		TOTAL FAMILY UNIT MEMBERS 9,303
OTHER 3,465		FAMILY MEMBERS PAYING HALF DUES 4,718
TOTAL 4,143		